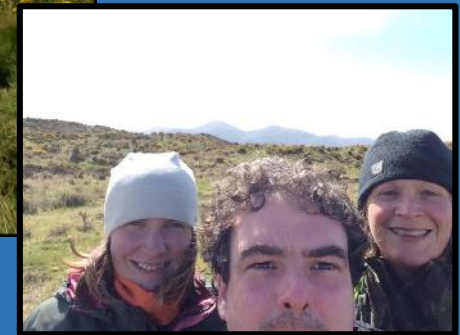


**LIVING  
LEGACIES**  
1914-18

FROM PAST CONFLICT  
TO SHARED FUTURE

# Material Cultures and Landscapes

Inspiring  
Communities  
and  
protecting  
our First  
World War  
Heritage.





# Material Cultures and Landscapes

Supported by the Centre for Archaeological Fieldwork (CAF), Queen's University Belfast .  
Helping communities across the UK to:

- Tell their stories and share these stories with others – discover personal connections to local First World War landscapes
- Identify physical remains of First World War training camps, airfields, sound mirrors, practice trenches etc.
- Digitally access & develop platforms for analysis, documenting and recording of these landscapes
- Establish best methods to display/share their findings using a range of technical hardware and software's, including GIS
- Support with archaeological projects, to create a lasting archive of research outputs



# LIVING LEGACIES

1914-18

FROM PAST CONFLICT  
TO SHARED FUTURE

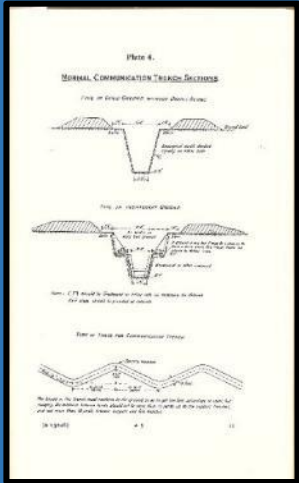
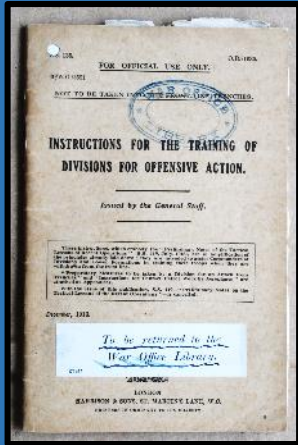
# Material Cultures and Landscapes



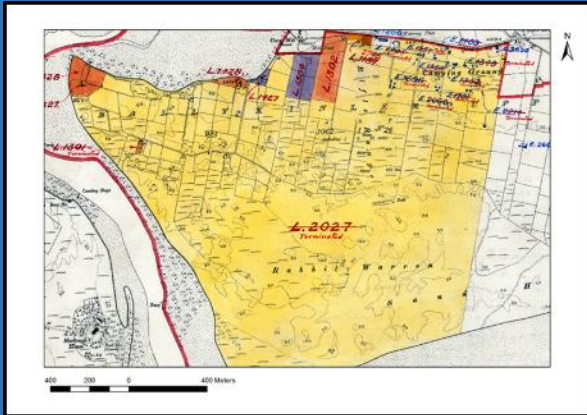




**“Holistic”,  
Multidisciplinary,  
Community  
Research**



- Identification of relevant historical documentation including archives & official histories
- Map Regression
- Data Analysis
- Ground truthing with Community excavation

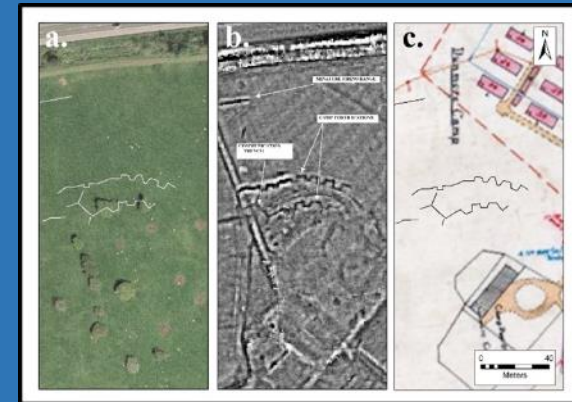




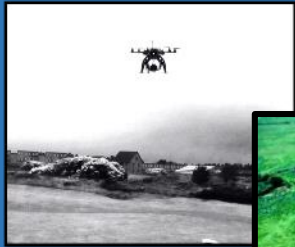
# LIVING LEGACIES

1914-18

FROM PAST CONFLICT  
TO SHARED FUTURE



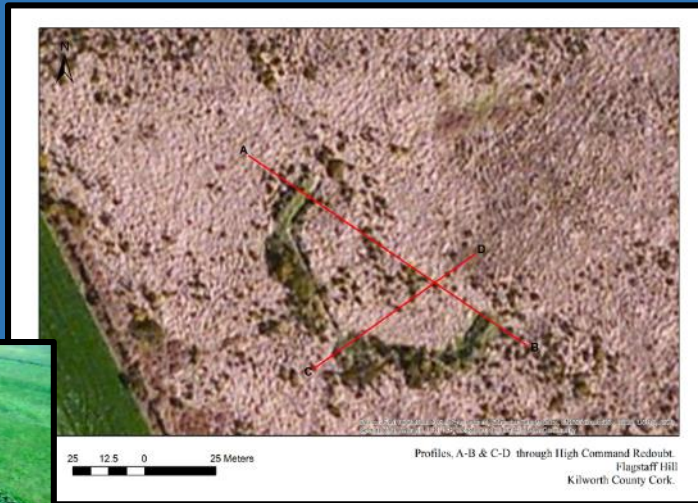




Hexicopter UAV –  
Short Range Oblique  
and Vertical Aerial  
photography.



Oblique & vertical geo-coded  
photography



**Collecting Data**  
Orthophotography ©Bing  
Maps & ©Google Earth  
Differential GPS Surveying of  
identified features



**LIDAR  
analysis**



# LIVING LEGACIES

1914-18

FROM PAST CONFLICT  
TO SHARED FUTURE

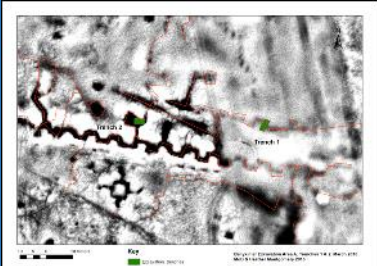


## BALLYKINLER, COMMUNITY EXCAVATION IN ACTION

AUGUST 2016

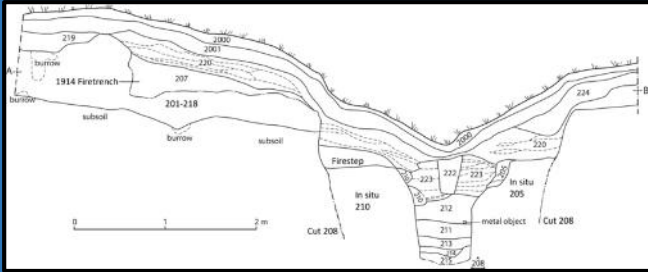






## Participating Groups

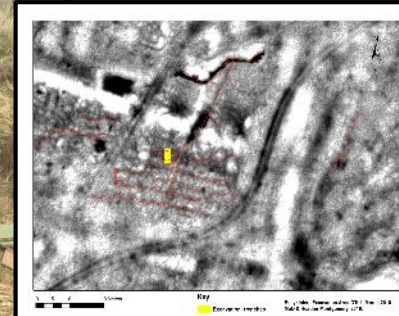
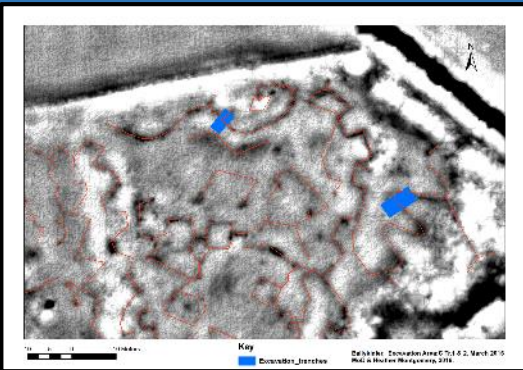
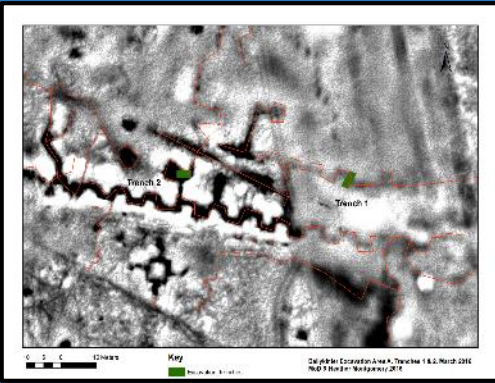
- Downpatrick Young Archaeologists Club (YAC)
- Army Cadet Force NI (ACFNI)
- Serving and retired military personnel
- Lisbellaw and South Fermanagh WW1 Society
- Friends, family and colleagues of the excavation crew and Queen's University Belfast.







# BALLYKINLER COMMUNITY EXCAVATIONS 2016



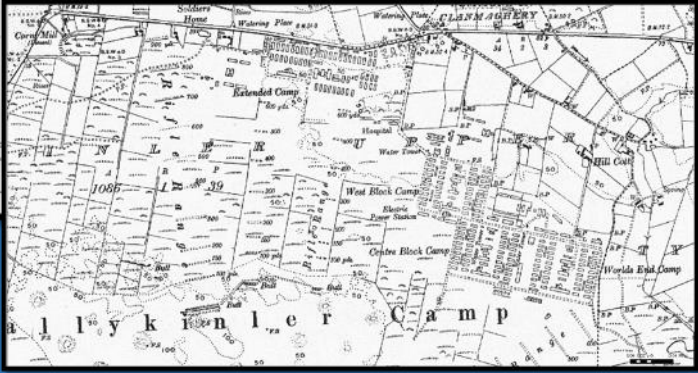
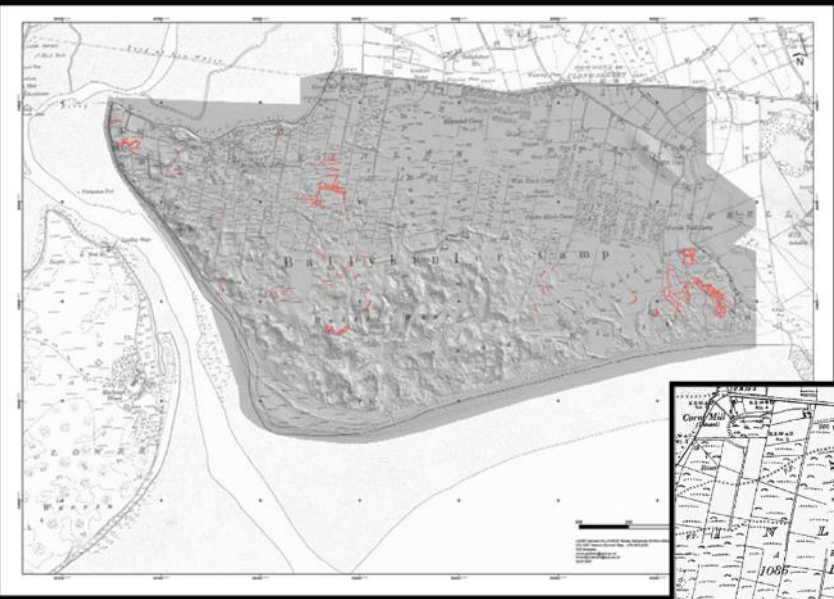
Area D



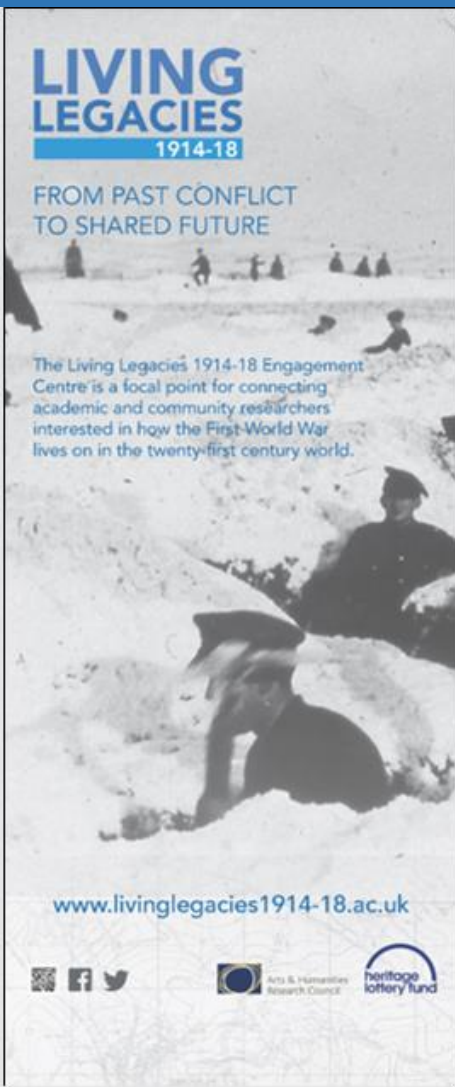
Area C



# Some of Our Work - Mapping First World War Landscapes







## How Living Legacies Can Help With Your Project

- Desk based assessment , research and project planning
- Provide background to First World War archaeology
- How to access Defence Heritage Databases; Site recording using the DHP web-site, CBA Home Front Legacy, FWW airfields
- Assist with digital mapping techniques, exploring forgotten First World War heritage
- Health and Safety during fieldwork and best archaeological practices
- Assist in developing community-led fieldwork projects
- Provide example of archaeological features, key elements of FWW military landscapes and associated material culture
- Advice on archaeological recording methods
- Provide a range of talks, demonstrations and artefact handling sessions